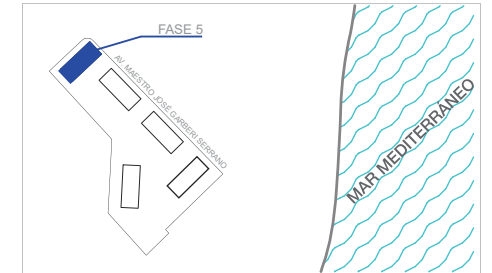
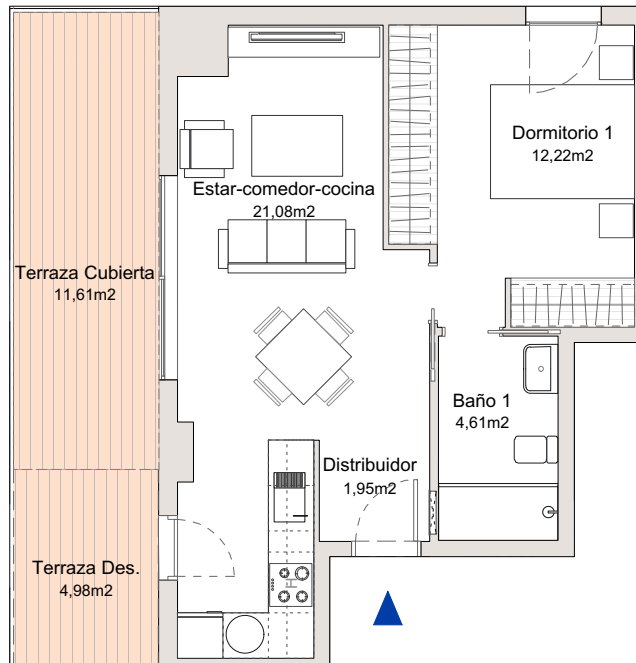


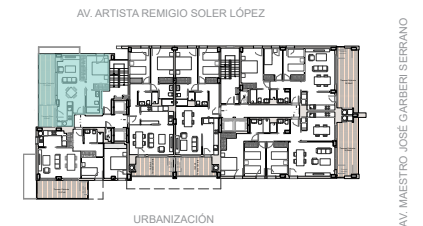
TU CASA ITACA

PLANTA 5_PUERTA 6



Residencial ITACA _ EDIFICIO 5

Playa de San Juan Norte, Alicante



Superficie Útil	39,86 m ²
Superficie Terrazas	16,59 m ²
Superficie Útil Total	56,45 m ²
Superficie Construida (incl. terraza)	63,26 m ²